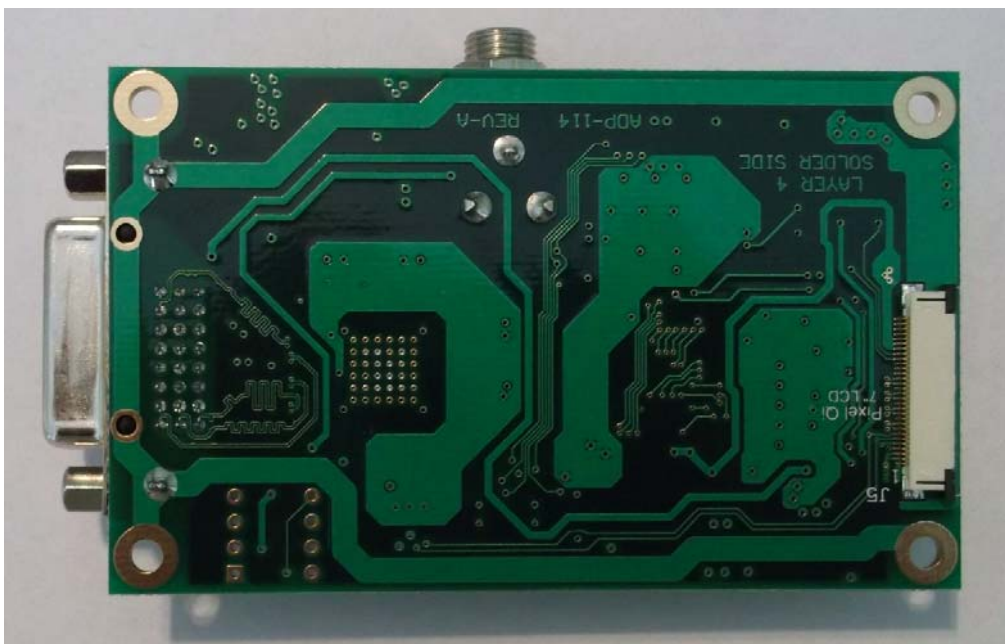
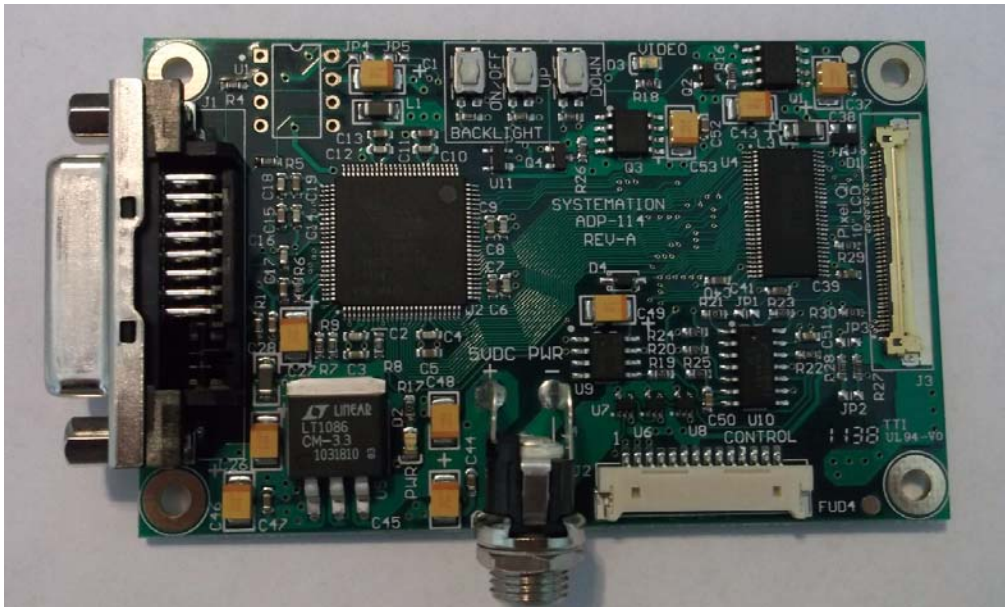


ADP-114

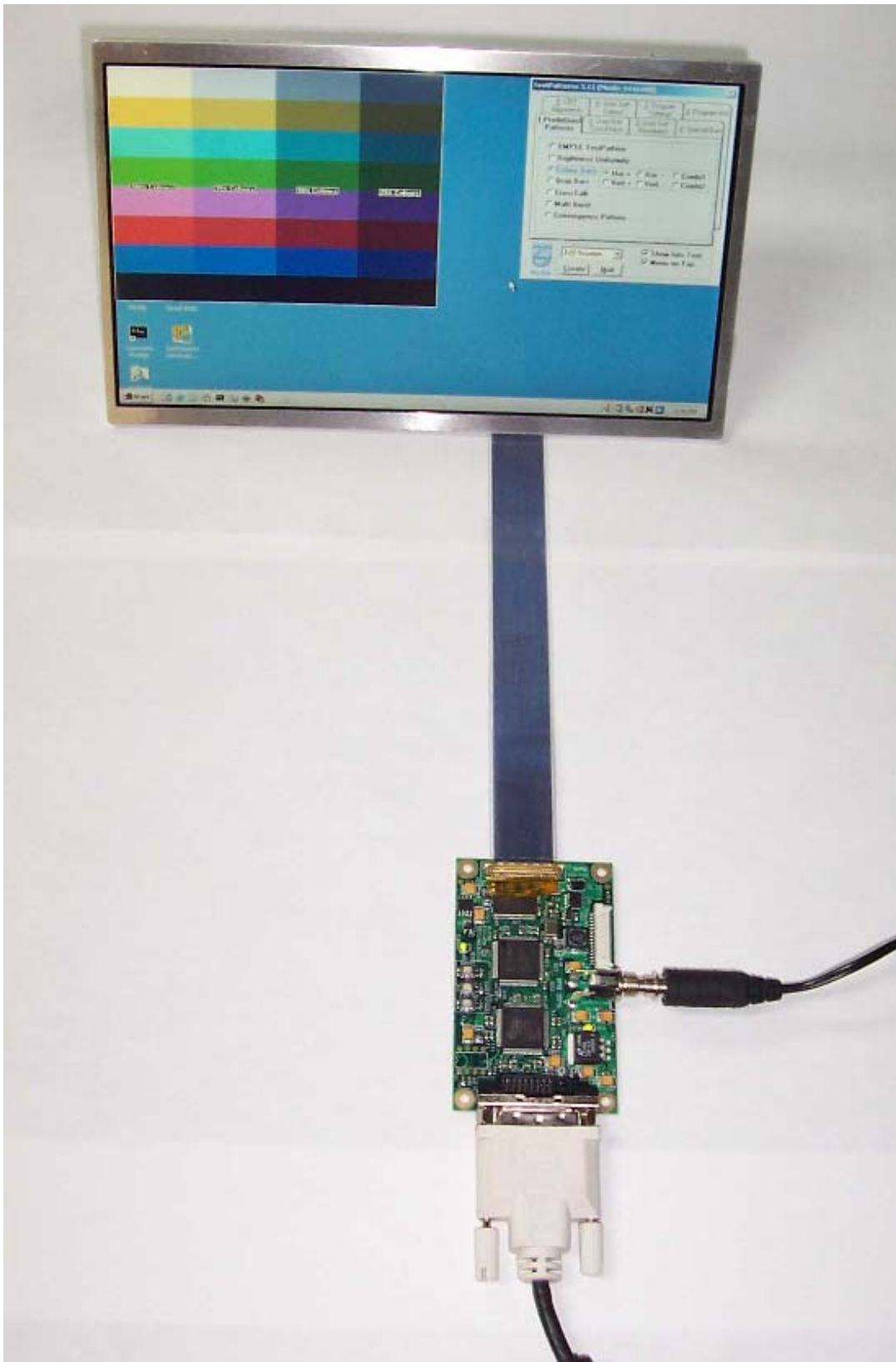
DVI to LVDS Adapter Board for displays using 40 pin VESA standard

The Systemation ADP-114 Adapter Board converts DVI video to LVDS video. This board is specifically designed to drive boards adhering to the VESA 40 pin standard



S P E C I F I C A T I O N S

- 1 – Video Input: DVI-D Video on standard DVI 24 pin connector
- 2 – Video Output: LVDS Single Channel
Output resolution is 1024x600 as defined by the EDID
The LCD is 6-Bits per color
- 3 – Output Conns: 1 - iPex 20455-040E-12
2 – Molex 52435-3071 FFC type
- 4- Cables: Mitas Electronics P/N:
ME2008C20004001P. (Length 10")
FFC, Quadrangle
Products P/N: FFC-P0.5mm-30Cx152mm-
AD(Length=6.0")
- 5 – Backlight Control: An LED driver is contained on the ADP-114 to drive LED backlight.
- 6 – Controls: Three pushbuttons are located on the board for:
Backlight On/Off
Brightness Up
Brightness Down
Power on defaults to full brightness.
These controls are also available on the 14-pin expansion connector, J2.
- 7 – Input Power: 5 VDC on connector J4
J4 – 2.5mm barrel type
External 5 VDC can be applied on the expansion connector J2.
- 8 – Board Size: 3.5" X 2.0" X 0.5"
Mounting holes on corners





Expansion Connector – J2

Type: 14-pin straight
Mfgr: Molex
P/N: 53780-1470

Mating Connector:

Mfgr: Molex
P/N: 51146-1400

Pin	Description
1	Backlight On/Off (Active Low) Switch closure to Gnd
2	Brightness Up (Active Low) Switch closure to Gnd
3	Brightness Down (Active Low) Switch Closure to Gnd
4	Gnd
5	Gnd
6	5VDC Power In
7	5VDC Power In
8	Video Status (Active High when video present)
9	3.3V Out
10	Reserved
11	Reserved
12	Reserved
13	Reserved
14	Gnd

Power Connector – J4

Type: 2.5mm Barrel Type
Mfgr: Switchcraft
P/N: 712RAS

Mating Connector:

Mfgr: Switchcraft
P/N: 761KS12

ORDERING INFORMATION:

1 – ADP-114

DVI to LVDS Adapter Board

Systemation Technology Inc.
1321 3rd Street
League City, Texas 77573
281-332-7186
281-332-7188 (fax)